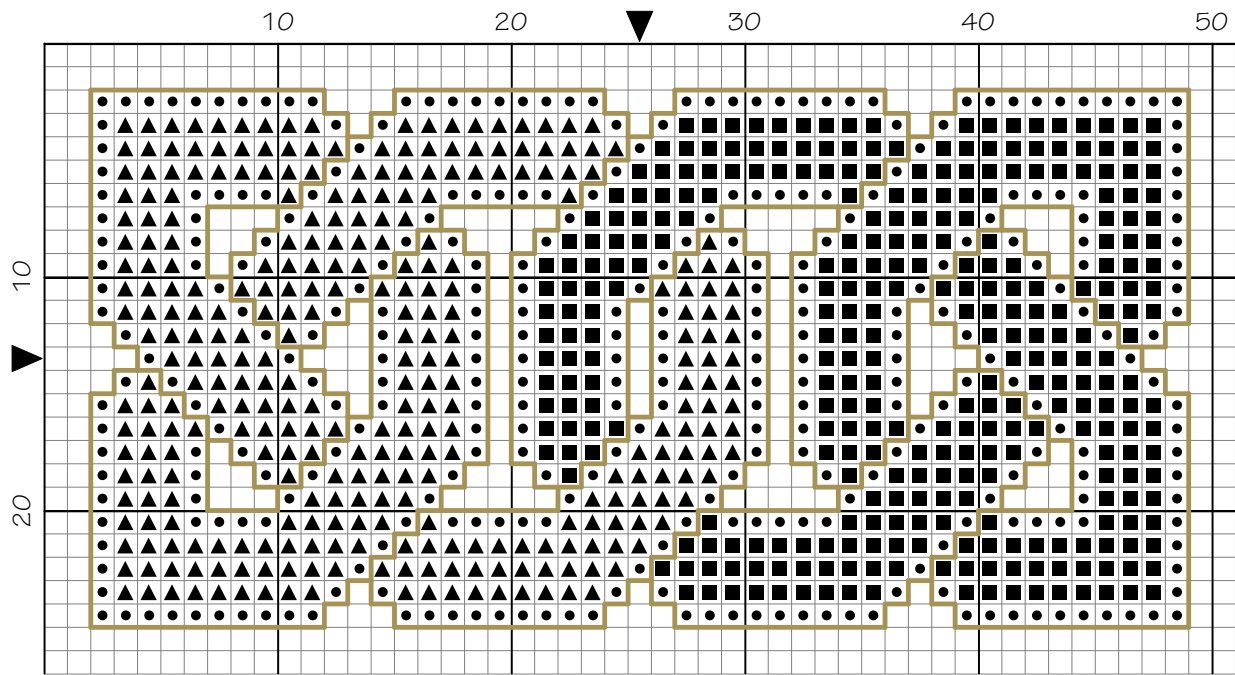


# Celtic Tin Topper by Rabbit Girl Crafts



© 2016 Rabbit Girl Crafts

Legend:

● DMC-444

■ DMC-798

▲ DMC-911

Backstitches:

— DLE-E3821

## Celtic Tin Topper

---

**Author:** Alice Creason  
**Company:** Rabbit Girl Crafts  
**Copyright:** © 2016 Rabbit Girl Crafts  
**Website:** <http://www.rabbitgirlcrafts.com/>  
**Grid Size:** 51W x 27H  
**Design Area:** 3.36" x 1.64" (47 x 23 stitches)

### Legend:

■ ■ DMC 444 lemon - dk  
■ ■ DMC 798 delft blue - dk

■ ■ DMC 911 emerald green - md

### Backstitch Lines:

— DLE-E3821 Light Gold

### Backstitching

Backstitch using one strand of DMC Light Effects E3821.

### Fabric Size

The finished size is approximately 3 3/8" x 1 5/8" when stitched on 28 count fabric.

### Finishing

1. Cut a piece of matboard the same size as the tin top. (You can trace around the tin bottom onto the matboard for a perfectly sized piece.)
2. Then cut a rectangular piece of batting slightly smaller than matboard, glue the batting to the matboard and let dry.
3. Center the design over the padded matboard piece, trim any edges on the stitched piece, and then lace the piece to the matboard using sewing thread. Adjust the piece until it is centered.
4. Glue the design onto the tin top and press into place (a couple heavy books on top helps). Let dry overnight.
5. Decorate your tin with cording, ribbon and any other embellishments you wish!

### Follow Me

Web: [www.rabbitgirlcrafts.com](http://www.rabbitgirlcrafts.com)

Instagram: thatrabbitgirl

Pinterest: thatrabbitgirl

For personal use only. Reproduction or distribution of the pattern either electronically or in hard copy form is prohibited. © 2016 Rabbit Girl Crafts